

ADELMAN'S

(330) 456-0206

(800) 643-2001

Fax: (330) 456-3959

Check for latest inventory:

www.adelmans.com

TRUCK PARTS CORP. - Main Office

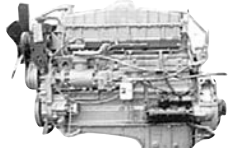
2000 Waynesburg Rd. S.E., Canton, OH 44707

HOURS: Mon. thru Fri., 8:00 a.m. to 4:30 p.m., Sat. 'til noon

ENGINES

ONE OF THE NATION'S
LARGEST ENGINE
INVENTORIES!

Used • Complete • Tested
No Core Needed!



JOHN DEERE

4239D, Non turbo	\$2,750
4239T, Turbocharged	\$2,950
4039D, Non turbo	\$2,950
4039T, Turbocharged	\$3,250
4045D, Non turbo	\$3,250
4045T, Turbocharged	\$3,400
6059T, Turbocharged	\$4,950
6068T, Turbocharged	\$5,500

FORD	
7.8, 6 cyl., 240 hp	\$2,750
7.8, 6 cyl., 210 hp	\$2,350
6.6, 6 cyl.	\$1,950

DETROIT	
Ser. 60 II, III, IV	P.O.R.
'09 DD-15	\$10,500
8V-92-TA	\$2,950
8V-71, (318 hp)	\$1,995
6V-92-TA	\$2,500
6-71 (238 hp)	\$1,750
6V-71	\$2,750
6V-53	\$2,500
3-71	\$1,850
4-71	From \$2,750
3-53	\$2,350
4-53	\$2,950
8.2-T, Turbo & natural	\$2,450
12V-71	\$4,750
Series 50	From \$3,250

MACK ENGINES	
300 2-val.	From \$2,950
T675, 237 hp	\$2,500
T676, 300 hp	\$3,000
E-M-6, 4-valve	\$3,500
E-M-7 4-valve	From \$3,750
MS-200, 6 cyl.	\$1,950
MS-300, 6 cyl.	\$2,750
E-Tech 300 hp	\$3,750

CUMMINS	
ISX 400-500 hp	From \$7,000
N14 (330-500 hp)	From \$3,950
400 BC I, III & IV	Call
300/350 BC III & IV	\$3,500
300/350 BC I & II	\$2,950
350 S.C.	\$2,350
335, 290, 270, 250	From \$1,500
4BT, 3.9	\$3,350
6-BT, 5.9	From \$2,750
6CT 6 Cyl., 8.3L	From \$3,450
M11-E Clect-Plus	\$3,750
L-10	From \$2,750
ISM 330-370 hp	\$3,950
ISC, elec., 8.3, 285 hp	\$4,250

V-8 CUMMINS	
504 V8	\$3,000
555 V8 & Turbo	From \$3,500
VT 903 V8	\$2,750

INT'L. DIESELS	
DT 466 In-Line Pump	\$2,450
9.0L, V8	\$2,250
DT360	\$2,350
DT466-E, elec.	\$3,250
DT466, NGD	\$3,250

PERKINS	
4-236, 4 cyl.	\$2,200
6-354, 6 cyl., natural	\$2,950
1004, 4 cyl.	From \$2,950

CAT ENGINES	
C-15	From \$7,500
C-12	From \$4,750
C-10	\$3,750
3208	\$2,500
3208-T turbo	\$3,250
3116 6-Cyl.	From \$2,950
3126 6-Cyl.	From \$2,950
3406-B	From \$3,500
3406E (355-500 hp)	From \$3,500
3406TA, after cooled	\$4,200
3306-TA (DI)	\$5,500
3176-TA	\$2,950
3412E	\$18,500

DEUTZ	
FL3-912/913	\$2,150
FL4-912	\$2,950
FL4-914	\$2,950
FL5-912	\$2,750
FL6-912	\$3,750
FL6-913-T turbo	\$4,250

MERCEDES	
MB4000 EGR, 435 & 460 hp	\$5,250 ea.
MB4000 non-EGR	\$4,500

VOLVO	
VD-12 EGR ('04-'08)	\$6,500
VD-12 ('95-'03)	\$4,500

TRANSMISSIONS



DIFFERENTIALS



(500) TDM. AXLE HOUSINGS & SHAFTS



HUGE NEW PARTS INVENTORY

PTO & Pumps
Gears • Bearings
Flywheels
Engine Bell Housings
Oil Pans
U-Joints

NEW DIESEL ENGINES

Mercedes OM366	\$6,750
Perkins 804854E-E34TA	\$5,500
Cat 3306 D.I. app. D7 dozer	\$13,850
Cat C12 Ind.	\$15,500
Cat C-9	\$11,500
Cat C-7, 370 hp	\$10,500
Cat C 3 4B	\$5,500
Perkins 854-E	\$5,500
JD 4039-T, gov't. rebuilds	\$5,450

(15) DETROIT SERIES 60 12.7 & 14.0L

Tested, complete, w/Jake.



430-515 hp From \$5,000

CAT C7, 3126, 3116

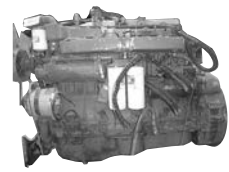
Complete & tested.



C7	From \$4,250
3126	From \$2,950
3116	From \$2,950

(20) MACK E-7

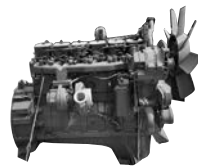
Complete & tested, 300-427 hp, From \$3,750.



Also: Manual engines in stock!!

CUM. 4 & 6 CYL.

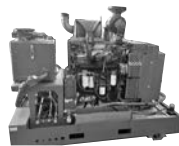
Complete & tested.



Cum. 4BT, 4 cyl. turbo	\$3,350
Cum. 6BT, 6 cyl. turbo	\$2,950

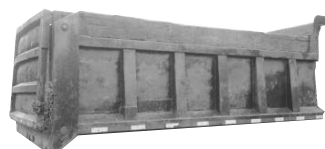
(100) POWER UNITS

Cat, Cum., Det. pwr. w/hyd. pwr. units, some w/hand clutches, 80-220 hp.



Late model low hr. units, call today!

(20) DUMP BEDS 9'-20' Steel & Aluminum



Compete w/Hoist Great prices, call!

MERCEDES OM460LA/MBE4000

All complete & run tested.



'00-'03 Models	\$4,750 ea.
'04-'07 (EGR) Models	\$5,250 ea.
Also DPF Models	\$6,500 ea.

TIRE & WHEEL SALE

(500) Tires!
11x22.5,
11x24.5.



LOW PRICES!

Alum. whls., From \$100 ea.

CABS, HOODS & DOORS



All makes & models!

Dismantling Thousands of Trucks Late Models Arriving Daily



- Axle Housings
- Axle Shafts
- Cabs
- Doors
- Hoods
- Front Axles
- Power Steering
- Allison Trans.
- Radiators
- GI Parts
- Rear Ends
- Transmissions
- Winches
- Flats & Dumps
- Van Bodies
- Engines
- Construction Equip.
- Loaders/Parts
- Power Units
- Jake Brakes
- Lift Axles

ADEL. MAN'S

TRUCK SALES CORPORATION OVER (300) UNITS IN STOCK

2000 Waynesburg Road S.E.

Canton, Ohio 44707

HOURS: Mon.-Fri. 8:00 A.M. to 4:30 P.M.

Sat. Until Noon

PHONE: (330) 456-0206

FAX: (330) 456-3959

NAT'L. WATS: (800) 643-2001

See Us On The Internet At www.adelmans.com

(5) '11 & '12 INT'L. DAY CABS



MaxForce 430 hp, 10 spd., tdm. axle, 300,000 miles. **SPECIAL \$15,900**

(3) '08 MACK GU713 TRI-AXLE DUMPS



Mack MP8 455-M, 18 spd., 58R, 21' alum. box, 200,000 mile average, **\$62,500.**

(8) '96-'00 OSHKOSH



6x6 C&C, Cum. M11 & L10, 8LL, 40R & 46R **From \$15,900**

(9) IN STOCK DUMP TRLRS.



28'-32' Alum. high side, East, Frue., City, Allison, tdm., tri, ready to work **Call for details**

(3) '00-'04 FTL SLPRS.



Det. & Cat eng., 10 spd., 40R, air ride. **From \$9,500**

'05 PETE TRACTOR



Cat C13, 420 hp, 10 spd., 40R, day cab, clean truck **\$13,450**

(5) '12-'13 INT'L. PROSTARS



slpr., MaxxForce, 430-470 hp, 10 spd., low mileage - 250,000-430,000 . . **From \$14,950**

(10) '06 VOLVO S/A TRACTORS



Cum. ISX, 400 hp, 10 spd., 23R **\$8,450**

(30) '04-'07 STERLINGS



Mercedes, 460 hp, 10 spd. or Autoshift, 40R, air ride, good tires, '06 & '07's **\$7,450**
'04's **\$6,950**

(10) MACK CH TRACTORS



'00-'05, some w/wet lines, Mack 300-400 hp, tdm. **Call for details**

(3) '09 MACK CX613 S/A



Mack MP-7, 10 spd., 23R . . . **From \$10,500**

(3 EA.) '98 & 00 MACK RD688 C&C



E7 350 hp, 8LL, 44R **Choice \$17,900**

(5) '00 VOLVO TRI-AXLE C&C



Cum. 370 hp, 8LL, 46 lockers, 18F, good dump chassis **Choice \$16,500**

(2) '00 & '04 KW C&C



T800, low miles, Cum. 375 hp, 8LL, 46R lockers **From \$18,500**

(2) '11 & '12 INT'L. S/A 8600



MaxxForce 13L, 410 hp, 9 spd., S/A, low miles **From \$11,500 ea.**

(7) S/A VANS



Int'l., FTL & GMC, 20'-26' boxes, auto. & std. shifts **Call for Details**

'06 INT'L. C&C



Int'l. dsl., 6 spd., S/A, LWB **\$8,750**
Also: (6) Other C&C's.

(6) MACK RD MIXERS



RD 688 Mack, 350 hp, 8LL, 44R, 11-yd. mixer w/stinger, low miles **\$18,900 ea.**

'98 INT'L. TRACTOR



Det. 60, 12.7, 470 hp, 10 spd., 12F, 40R, ready to work **\$11,900**

CHAMPION ROAD GRADER



Champion 726A, articulated, AWD, Cum. 8.3, frt. ripper, 12' blade, 14x24 tires **\$21,500**

MACK POLE SETTER w/AUGER



300 Mack, 9 spd., 44R, Terex Telelect pole setter unit, model CII60, clean truck. **\$12,500**

(10) HEAVY WINCH TRACTORS



- (2) FTL 6x6, Det. 12.7L **\$29,500 ea.**
- (3) M920, 6x6, Cum. 400 **\$18,500 ea.**
- (5) Mack tdm. R-Models **Call**

MACK RD & CH DUMPS



RD690 Tri-axle dump, T2080 8LL, Mack 4-valve manual trans., 44R, needs T.L.C.